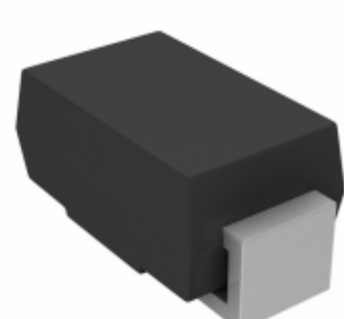


P2SMA140A-M3/61T



Part Number: [P2SMA140A-M3/61T](#)
Manufacturer: [Electro-Films \(EFI\) / Vishay](#)
Description: TVS DIODE 119V 192V DO214AC
Data sheet: [P2SMA130A thru P2SMA220A-M3](#)

RoHS Status: Lead free / RoHS Compliant
Ship From: Hong Kong
Shipment Way: DHL/Fedex/TNT/UPS/EMS

Images are for reference only.
 See Product Specifications for product details.
 Buy P2SMA140A-M3/61T with confidence from
 Component-World.HK, 1 Year Warranty

[Request For Quotation](#)

PRODUCT PARAMETER

| | | | |
|---|------------------------------------|---|--|
| Part Number | P2SMA140A-M3/61T | Manufacturer | Electro-Films (EFI) / Vishay |
| Description | TVS DIODE 119V 192V DO214AC | Lead Free Status / RoHS Status | Lead free / RoHS Compliant |
| Quantity Available | 869637 pcs | Data sheet | P2SMA130A thru P2SMA220A-M3 |
| Category | Circuit Protection | Voltage - Reverse Standoff (Typ) | 119V |
| Voltage - Clamping (Max) @ Ipp | 192V | Voltage - Breakdown (Min) | 133V |
| Unidirectional Channels | 1 | Type | Zener |
| Supplier Device Package | DO-214AC (SMA) | Series | TransZorb® |
| Power Line Protection | No | Power - Peak Pulse | 200W |
| Packaging | Tape & Reel (TR) | Package / Case | DO-214AC, SMA |
| Operating Temperature | -55°C ~ 150°C (TJ) | Mounting Type | Surface Mount |
| Moisture Sensitivity Level (MSL) | 1 (Unlimited) | Lead Free Status / RoHS Status | Lead free / RoHS Compliant |
| Current - Peak Pulse (10/1000µs) | 1.04A | Capacitance @ Frequency | - |
| Applications | General Purpose | | |

Component-World.com is a Reliable Stocking Distributor of Electronic Components. We specialize in all Electro-Films (EFI) / Vishay series electronic components. We have 869637 pieces of Electro-Films (EFI) / Vishay P2SMA140A-M3/61T in stock available now. Request a quote from electronics components distributor at Component-World.com, our sales team will contact you within 24 hours.
 RFQ Email: info@Components-World.com

RELATED PRODUCTS

| | | | |
|--|---|--|---------------------|
| | Part#: P2SMA130A-E3/5AT Description: TVS DIODE 111V 179V DO214AC | Manufacturers: Electro-Films (EFI) / Vishay | RFQ |
| | Part#: P2SMA220A-M3/61T Description: TVS DIODE 185V 328V DO214AC | Manufacturers: Electro-Films (EFI) / Vishay | RFQ |
| | Part#: P2SMA130A-E3/61T Description: TVS DIODE 111V 179V DO214AC | Manufacturers: Electro-Films (EFI) / Vishay | RFQ |
| | Part#: P2SMA200A-M3/61T Description: TVS DIODE 171V 274V DO214AC | Manufacturers: Electro-Films (EFI) / Vishay | RFQ |
| | Part#: P2SMA130A-M3/61T Description: TVS DIODE 111V 179V DO214AC | Manufacturers: Electro-Films (EFI) / Vishay | RFQ |
| | Part#: 30KPA160CA-HR Description: TVS DIODE 160V 252.6V P600 | Manufacturers: Hamlin / Littelfuse | RFQ |
| | Part#: P2SMA150A-E3/61T Description: TVS DIODE 128V 207V DO214AC | Manufacturers: Electro-Films (EFI) / Vishay | RFQ |
| | Part#: P2SMA130A-M3/5AT Description: TVS DIODE 111V 179V DO214AC | Manufacturers: Electro-Films (EFI) / Vishay | RFQ |
| | Part#: P2SMA150A-M3/61T Description: TVS DIODE 128V 207V DO214AC | Manufacturers: Electro-Films (EFI) / Vishay | RFQ |
| | Part#: P2SMA180A-M3/61T Description: TVS DIODE 154V 246V DO214AC | Manufacturers: Electro-Films (EFI) / Vishay | RFQ |
| | Part#: P2SMA200A-M3/5AT Description: TVS DIODE 171V 274V DO214AC | Manufacturers: Electro-Films (EFI) / Vishay | RFQ |
| | Part#: P2SMA150A-M3/5AT Description: TVS DIODE 128V 207V DO214AC | Manufacturers: Electro-Films (EFI) / Vishay | RFQ |
| | Part#: P2SMA150A-E3/5AT Description: TVS DIODE 128V 207V DO214AC | Manufacturers: Electro-Films (EFI) / Vishay | RFQ |
| | Part#: P2SMA140A-E3/61T Description: TVS DIODE 119V 192V DO214AC | Manufacturers: Electro-Films (EFI) / Vishay | RFQ |
| | Part#: P2SMA140A-E3/5AT Description: TVS DIODE 119V 192V DO214AC | Manufacturers: Electro-Films (EFI) / Vishay | RFQ |
| | Part#: P2SMA170A-M3/5AT Description: TVS DIODE 145V 234V DO214AC | Manufacturers: Electro-Films (EFI) / Vishay | RFQ |
| | Part#: P2SMA170A-M3/61T Description: TVS DIODE 145V 234V DO214AC | Manufacturers: Electro-Films (EFI) / Vishay | RFQ |
| | Part#: P2SMA180A-M3/5AT Description: TVS DIODE 154V 246V DO214AC | Manufacturers: Electro-Films (EFI) / Vishay | RFQ |
| | Part#: P2SMA140A-M3/5AT Description: TVS DIODE 119V 192V DO214AC | Manufacturers: Electro-Films (EFI) / Vishay | RFQ |
| | Part#: P2SMA220A-M3/5AT Description: TVS DIODE 185V 328V DO214AC | Manufacturers: Electro-Films (EFI) / Vishay | RFQ |

Related keywords for P2SMA140A-M3/61T

| | | | |
|---|---|---|--|
| Electro-Films (EFI) / Vishay P2SMA140A-M3/61T | P2SMA140A-M3/61T distributor | P2SMA140A-M3/61T supplier | P2SMA140A-M3/61T price |
| P2SMA140A-M3/61T download datasheet | P2SMA140A-M3/61T datasheet | P2SMA140A-M3/61T stock | buy P2SMA140A-M3/61T |
| Electro-Films (EFI) / Vishay P2SMA140A-M3/61T | Electro-Films (EFI) / Vishay P2SMA140A-M3/61T | Vishay Electro-Films P2SMA140A-M3/61T | Phoenix Passive Components / Vishay P2SMA140A-M3/61T |